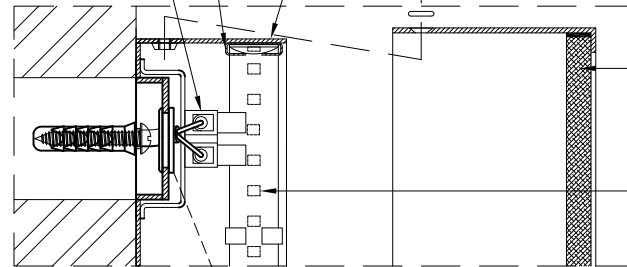


STAINLESS STEEL FIXING TABS FOR LED STRIP

316 STAINLESS STEEL BACK PLATE TO BE WHITE POWDER COATED, #29

(8) STAINLESS STEEL COUNTERSUNK SCREWS MATT BLACK POWDER COATED, #77A
WATERPROOF RUBBER "O" RINGS FOR SCREW HOLES

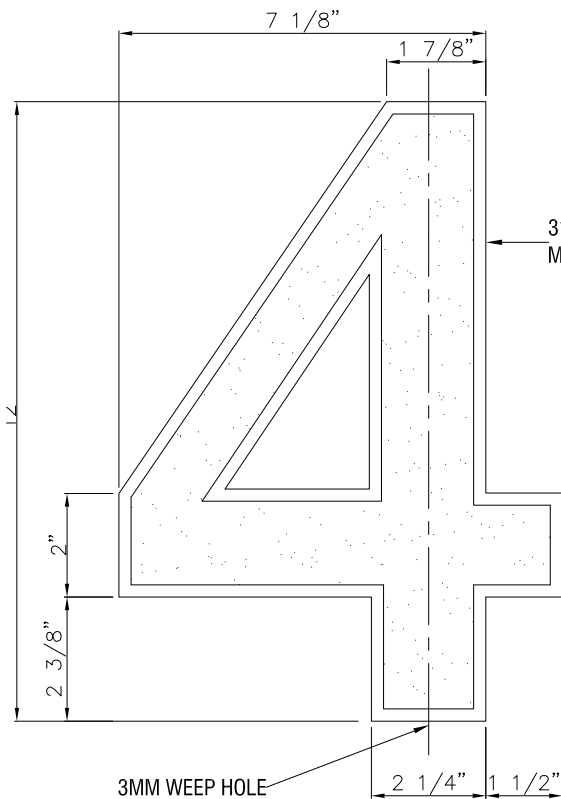
PLASTIC 2-WAY CONNECTOR



A - A



BLACK RUBBER WATERPROOF WIRING RING



316 STAINLESS STEEL FRAME MATT BLACK POWDER COATED, #77A

120V LED DRIVER SHARED BY 5 ILLUMINATED SIGNS
DRIVER NOT INCLUDED

25' 20AWG EXPOSED 2-CORE BLACK CORD
NO WIRING CONNECTOR. GOING DIRECT TO LED DRIVER

(4) STAINLESS STEEL SELF-TAPPING MOUNTING SCREWS
PLASTIC ANCHORS FOR MOUNTING TO PLASTER
WATERPROOF RUBBER "O" RINGS FOR SCREW HOLES

